

Hi, just a reminder that you're receiving this email because you have expressed an interest in Duluth Sister Cities International. Don't forget to add dsci@duluthmnsistercities.org to your address book so we'll be sure to land in your inbox!

You may [unsubscribe](#) if you no longer wish to receive our emails.

Latitudes

Building Bridges to Global Understanding



Duluth Sister Cities
International

IN THIS ISSUE...

[President's Message](#)

[Welcome to Deb Scott](#)

[Culture through Cuisine](#)

[Peace Bell to Ring September 11](#)

[Bus Trip - Sept. 29](#)

[Heart of the Continent
Partnership and DSCI](#)

Mark your calendar

The Petrozavodsk Committee meets at 5:30 p.m. in the DSCI Office on the second Monday of each month. The next meeting on **September 10**.

The Växjö Committee meets at 4:30 p.m. on the third Monday of each month in the DSCI Office. The next meeting is on **August 20**.

For information on the Thunder Bay Committee, contact us at dsci@duluthmnsistercities.org

~ ~ ~ ~ ~

Annual Meeting - 5:30 pm

August 2012

President's Message

Along with city and student groups, this month found Duluthians exploring new cities and relationships around the world through our Duluth Sister Cities' programs!

- The City of Vaxjo welcomed many from Duluth, including Mayor Ness and several Duluth City Councilors, as they celebrated our 25 year relationship.
- We look at expanding our programs to partner with the Heart of the Continent project in an invitation from National Geographic for a Sustainable Tourism Initiative, including geo-tourism maps-- "Working to protect the places we love through wisely managed tourism and enlightened destination stewardship."
- Twelve Duluth students had an exciting visit to Isumi-shi, Japan. Photos of their adventures are at <http://www.facebook.com/welcomeback/requests/#!/DuluthSisterCitiesOharaJapan>



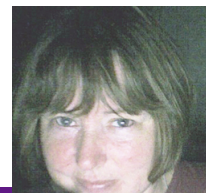
Liz Taylor

Save the date--Our Annual Meeting will be **Sunday, September 16, 5:30 p.m. at First United Methodist Church**. It will be a time to tell stories and celebrate all exchange visits, programs, and events from the past year, and be part of a four-nation chili feast!

These are exciting times for DSCI as we expand programs and look at new partnerships. Your input, participation, and membership are needed more than ever.

Welcome to Deb Scott, new DSCI Coordinator

We are very fortunate and excited to have Deb as part of our team! As DSCI's new Coordinator,



For more information call the DSCI office at 218-727-8375 or visit our [website](#) .

**Sister Cities
International
Member**



Duluth Sister Cities International is the local affiliate of the Sister Cities International global diplomacy network - which spans over 2,500 "friendship cities" in 134 countries.

 [Forward to a Friend](#)

[Like us on Facebook](#) 

[Join Our Mailing List!](#)

namesake. In 1993, the citizens of Ohara (now Isumi-shi) gratefully presented Duluth with a replica of the bell.

Bus Trip - Saturday, September 29

American Swedish Institute & Museum of Russian Art



You won't want to miss this year's bus trip to visit the American Swedish Institute and Museum of Russian Art!



The coach bus will depart at 7:30 a.m. on Saturday, September 29 and will return to Duluth at 7:30 p.m. The cost of \$55 includes admissions to the museums. Lunch will be at the Swedish restaurant in the new visitors center at the American Swedish Institute. There will be coffee/rest stops on both the trip down to the Twin Cities and on the return trip.

This community event celebrates the 25 years of Russian and Swedish sister city relationships and everyone in the community is invited to come along. If needed, we will have two coaches! **A paid reservation for this trip is due to the DSCI office by Friday, Sept. 21.** Watch for an announcement in our September newsletter!

Heart of the Continent Partnership and DSCI

The Heart of the Continent Partnership (HOCP) is a Canadian/American coalition of land managers and local stakeholders working together on cross-border projects that promote the economic, cultural and natural health of the lakes, forests and communities on the Minnesota/Ontario border.

Early in 2012, one of the regional teams of the HOCP, the North Shore Scenic Drive team, reached out to the Duluth Sister Cities International board to engage them in discussions of how the Duluth - Thunder Bay Sister City connection could play a special role in future collaborative projects of raising public awareness of the region, enhancing tourism, and strengthening cross-border partnerships. Since that early discussion, some exciting steps have been taken this year to work together!

A HOCP meeting conducted in Ontario, June 1-2, 2012 included a special field trip to highlight the success of the Thunder Bay Waterfront development project. As part of that field trip, DSCI Board President, Liz Taylor, and Thunder Bay Sister Representative, William Hryb, exchanged "I Love Thunder Bay" and "Duluth is a Cool City" T-shirts as gifts for Duluth Mayor Don Ness and Thunder Bay Mayor Keith Hobbs who were unable to attend. This event highlighted the special connection that is part of the Heart of the Continent region in northeast Minnesota and northwest Ontario. HOCP meeting participants and other special guests such as Linda Kachur, City of Thunder Bay, attended this fun and friendly exchange.

Heart of the Continent Partnership discussion in Duluth on June 27 explored "Regional Tourism and Exploring Partnerships." The meeting was attended by representatives from Duluth Sister Cities, Thunder

Bay Tourism, Explore Minnesota Tourism, Visit Duluth, the University of Minnesota, US Forest Service, Cook County Visitors Bureau, North Shore Scenic Drive, and the Arrowhead Regional Development Commission.

During this meeting Frank Jewell, St. Louis County Commissioner and HOCP Steering Committee member shared about the exciting invitation from the National Geographic to the Heart of the Continent Partnership to feature this region as part of their Sustainable Tourism Initiative. This initiative includes a series of geo-tourism maps, such as The Crown of the Continent (highlighting Alberta, British Columbia, and Montana). National Geographic defines geo-tourism as "Working to protect the places we love through wisely managed tourism and enlightened destination stewardship." The HOCP Steering Committee is working on a proposal response to National Geographic to develop this valuable resource for our region, which would rely on collaborative HOCP partnerships in northeast Minnesota and northwest Ontario. All at the meeting agreed that this project offers an exciting opportunity to highlight the cultural significance of the Duluth - Thunder Bay Sister Cities in our region.

COUPON FOR WORLD PEACE



Most people think of peace as a state of **Nothing Bad Happening** or **Nothing Much Happening**. Yet if peace is to overtake us and make us the gift of serenity and well-being, it will have to be the state of **Something Good Happening**.

-- E.B. White

No expiration date! Coupon may be doubled, tripled...share it with a friend!

[Forward email](#)



Try it FREE today.

This email was sent to bhundrieser@ardc.org by dsci@duluthmnsistercities.org | [Update Profile/Email Address](#) | Instant removal with [SafeUnsubscribe™](#) | [Privacy Policy](#).

Duluth Sister Cities International | 301 West 1st Street, Suite 308 | Duluth | MN | 55802